

CONTROL ASSEMBLY

WHITE WIRE FROM BRIDGE PICKUP TO 5 WAY SWITCH

YELLOW WIRE FROM MIDDLE PICKUP TO 5 WAY SWITCH

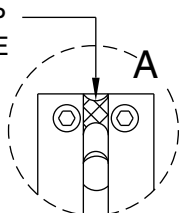
WHITE WIRE FROM NECK PICKUP TO 5 WAY SWITCH

RED WIRE FROM BATTERY SNAP

BATTERY SNAP

SOLDER BLACK WIRE FROM BATTERY SNAP TO TERMINAL #1 OF OUTPUT JACK ASS'Y

ACOUSTIC PICKUP FOR EACH BRIDGE SECTION (6)

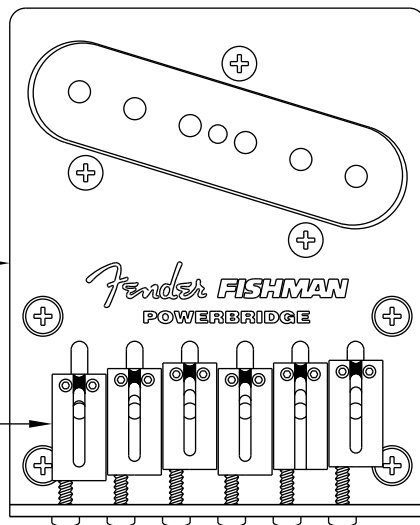


BRIDGE SECTION

N.T.S.

SEE DETAIL " A "

BRIDGE ASSEMBLY



15
19

SOLDER BLACK WIRE FROM NECK PICKUP
RED FROM MIDDLE PICKUP
BLACK WIRE FROM BRIDGE PICKUP TO BACK OF CONTROL POT

INSTALL SHRINK TUBING OVER ENTIRE LENGTH OF PIEZO CABLE BEFORE SOLDER TO POWERCHIP

STRIP PIEZO SHIELD TO ALLOW 1/4" OF INSULATOR ON LEAD WIRE AND SOLDER TO GROUND PAD ON POWERCHIP

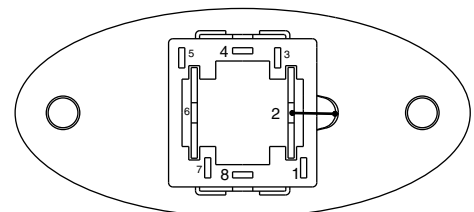
SOLDER BLACK LEAD WIRE FROM PIEZO CABLE TO PIEZO IN ON POWERCHIP

13

SOLDER WHITE WIRE FROM POWERCHIP ASS'Y TO TERMINAL #8 OF OUTPUT JACK ASS'Y

SOLDER SHIELD FROM POWERCHIP ASS'Y TO TERMINAL #2 OF OUTPUT JACK ASS'Y L=.300 TO AVOID SHORT

SOLDER RED WIRE FROM POWERCHIP ASS'Y TO TERMINAL #4 OF OUTPUT JACK ASS'Y



**OUTPUT JACK
TERMINAL DETAIL**

BOTTOM VIEW : N.T.S.